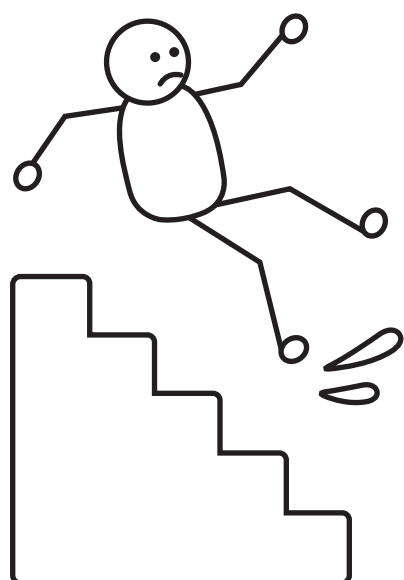


SUCCESSFUL STAIR INSTALLATION

STAIRS REMAIN ONE OF THE MOST COMMON AREAS FOR ACCIDENTS



OVER 800 RECORDED DEATHS A YEAR ATTRIBUTED TO SLIPS, TRIPS AND FALLS ON STAIRCASES

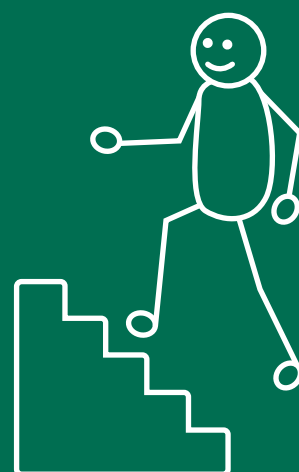
250,000 ESTIMATED VISITS TO A&E FROM STAIR RELATED ACCIDENTS

THE RISK OF A FALL IS **DOUBLED** IF THERE IS NO **WALL OR GUARDING** TO ONE SIDE OF THE STAIRS

ACCIDENTS ARE **NEARLY TWICE AS LIKELY ON STAIRS** CONSISTING OF STRAIGHT STEPS WITH NO WINDERS OR INTERMEDIATE LANDINGS

SQUEAKING STAIRS ARE A COMMON FAULT IN NEW BUILDS AND CAN BE AN **EXPENSIVE AND TIME-CONSUMING SNAG**

2/3 OF ALL VALID NHBC STAIR CLAIMS RELATE TO INSECURE STRINGS, RISERS, NEWEL POSTS AND, IN PARTICULAR, TREADS



FIVE STEPS TO STAIR SUCCESS



PREPARATION

Early consultation with the stair manufacturer is vital and will ensure the correct design and dimensions are provided. Check all parts and components are present and in good condition.



GET IT TIGHT

Wall strings should be correctly secured in place to provide the full strength of the stair. Loose joints are the main cause of squeaks, so ensure that any fixings (screws, bolts, etc) are appropriate for the structure to which the staircase is being fitted.



FOLLOW MANUFACTURER GUIDELINES

Follow the fitting instructions exactly and do not modify any of the components, as adaptations will impact on performance and could negate your guarantee.



DON'T USE UNTIL FULLY INSTALLED

A stair is unsafe until fully fixed and completed and a suitable temporary guarding system should be used until the final guarding is in place.



BUILD WITH THE BADGE

The BWF Stair Scheme offers accreditation and certification to an extremely high standard to ensure quality and safety. Stairs manufactured under the scheme will carry the badge to identify the manufacturer and a unique serial number to ensure traceability.

For more information or to download a copy of the BWF Stair Scheme Installation Guide visit www.bwfstairscheme.org.uk